

## Parish Council News – May 2009

### **PARISH COUNCILLOR - VACANCY**

There is still a vacancy for a member of the Parish Council – this is an ideal way to become involved in the way the village grows and evolves. Talk to an existing councillor or contact the clerk if you would like any further details

### **EASTFIELD CRESCENT**

It appears that the Eastfield Crescent resurfacing has been put back until June this year – the Council will try to publicise any information it receives about what's going to happen.

### **STOP THE DROP LITTER PICK**

A really huge thank you to everyone that joined in the litter pick at the end of April. Over 30 people arrived to help, and the majority were children – well done to everyone. We collected over 30 bags worth of rubbish and the unofficial prize for oddest find went to the person who found a pan, some unopened bacon and a plate!

### **FORD AT RUISBRICK LANE**

It has become apparent that someone or a group of people is putting potentially lethal objects into the ford where Ruisbrick Lane meets Northfields Lane. There are broken bottle which appear to be deliberately upturned in there, planks of wood with exposed nails and lately, sheep netting and barbed wire entangled together have appeared in the ford too. The suspicion is that they have been deliberately put there to deter either motor bikes or 4-wheel drives, but without any thought given to the horses and ponies that go through the water. If one of these objects was to harm an animal with a rider, the consequences could be most serious, especially if a child were to be involved. Please do not put anything in the ford and if you do ever cross through the water, please be very aware of the potential hazards.

### **ELECTIONS – JUNE 4TH**

Please be aware that there are elections on June 4<sup>th</sup>. There is one for the county council and one for the European Parliament. If you are not on the electoral roll, you will not be eligible to vote – contact the clerk for further details if you think you might not be eligible.

### **ALLOTMENTS**

The AGM was very well attended, with lots of very good feedback and views on the way forward. There is just 1 allotment left, so please contact Yvonne Banke [yvonne@nassington.org.uk](mailto:yvonne@nassington.org.uk) or Andrew Codman or the clerk (as below) if you are interested.

Sarah Rodger, Clerk  
782736 / [clerk@nassington.org.uk](mailto:clerk@nassington.org.uk)

## Would You Like To Support Our Church?

We all value our beautiful church and use it in different ways. Many people attend services there, both regularly or just at Easter and Christmas and for weddings and funerals and other special occasions. Others may enjoy the Band Concerts, the Harvest Suppers, the village Twinning Meetings and may also just slip in to the church for quiet contemplation. Always the church is the ancient heart of our village and of course it needs our support. It is expensive to maintain the fabric of the church and the Parochial Church Council has to send a large sum of money to the Peterborough Diocese each year as well.

Would you consider being a "FRIEND OF NASSINGTON CHURCH"?

This would only cost you £20 a year. We have designed an application form which allows to pay more if you wish or to become a Life member or a corporate member if you have a business.

**I feel strongly that it is time to spread the financial support to our church and not leave it to a very few people as happens at the moment. Most of us could afford around 40p a week to help.**

Please phone me if you would like an application form or collect one from The Church, Nassington Stores or Moulds Butchers or The Winesmith.

**Priscilla Padley 01780 782415**

## Nassington Preschool – Curry Evening

The management and committee of the preschool would like to extend huge thanks to everyone who supported the recent curry evening. It was a great success and we cleared almost £1,400, thanks to the enormous generosity in donations received and the support shown on the night.

The committee is sincerely grateful to Pritti and her family for all the hard work they put in to make the evening the success it was. As many of you know to your cost, the tickets sold very fast and I'm afraid that you really did miss out on an enormous treat (we'd catered for 'off sales' with any leftovers, but alas..... after people's seconds, and thirds, and by account fourths, there was not a morsel left)

The preschool is a vital asset to the village, offering an excellent start to the local children, but is totally self sufficient in terms of funding and depends completely on the generosity of its supporters in being able to offer the extras that go to make it such a superb facility. So, a massive "thank you" from the children and see you at the next one!

## NASSINGTON OPEN GARDENS WEEKEND

20 Open Gardens plus....

Prebendal Manor Medieval Garden (Saturday)

Duck Race (Sunday)

Plant, Jewellery, Book & Garden Furniture  
Stalls

Teas and Refreshments in Church

**SATURDAY JULY 4<sup>TH</sup> & SUNDAY JULY 5<sup>TH</sup>**

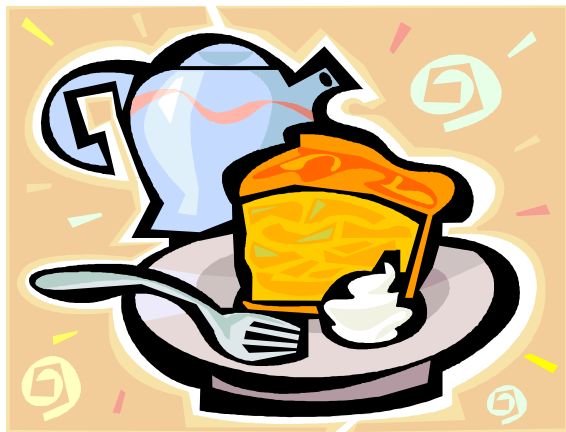
12noon-6PM EACH DAY

Adults £5.00 each

**Weekend ticket for two adults £15.00**

**Children 16 and under – Free**

Tickets available in advance from David Laking  
782025 or Philippa Joyce 782773



Proceeds to Nassington Church

**Saturday May 2nd**  
**Nassington Church**  
**10.30am—12.00noon**

Refreshments Cakes, Sausage Rolls

Chutney, Jam and Preserves

Garden Produce

Handcrafted Jewellery, Cards & Crafts

Book Stall

Bring & Buy

## Nassington Church News

**Easter**...thank you to all who decorated the church for this special occasion. The church was well attended for all the services, but as you know there are 200 chairs (of a sort) in the church so room for many more to join us!

May is a wonderful month with everything growing rapidly (including my weeds!) In our post-Easter day services we read of Jesus' many Resurrection appearances to his disciples which produce an even greater sense of wonder; and 40 days later we celebrate his Ascension with a 7.30pm service at Apethorpe.

The joint PCC meeting held in March decided on small changes only: Woodnewton services will be at 9.30 am (not 9.45) Nassington and Woodnewton will each have an 8.30am prayer book communion once a month, Nassington on the first Sunday prior to the family service, and Woodnewton on the 4<sup>th</sup> Sunday instead of the 9.30 am. service.

Our next Saturday coffee mornings are on May 2<sup>nd</sup> and June 6<sup>th</sup>, see you there.

The new upholstered chairs are now installed in the church with 86 having been donated, often in memory of a dear one. Please let Bishop John or David Laking know if you wish to do the same (still 14 at £70 each) The chairs will be dedicated at the 10.am benefice service on May 31<sup>st</sup> we hope for a big congregation including all those who have donated a chair.

The PCC decided to sell off all the poorer quality chairs for £5-10 each and there are still some of these available if you are interested. There is a notice in church indicating which ones; it seemed a pity to wait for Paul and bonfire night!

Christian Fellowship, on May 26<sup>th</sup>, will be especially interesting with a talk in church about the wall paintings, by John Maddison the Art historian for Ely cathedral; there will be a bring and share meal starting at 7.0pm (tel.783219 if you can come)

## Nassington Newsletter

### **Donations this month;**

£50 gratefully received from the Garden Society.

# OVER THE GARDEN WALL

OLD CODGER



Sometimes I wonder how many big stories I missed, as a working journalist, by absent-mindedly (or absent-mentally) drifting off the main event. Take the night when Mrs Thatcher was booted out of 10 Downing Street. I was outside that famous front door, one of a couple of hundred newshounds waiting for hours on a bitterly cold day for something to happen. Nothing much did, except for a brief appearance by the lady herself. She opened the lace curtains of an upstairs window and peered down, just like a nosey housewife trying to see who was coming up the neighbour's drive. She looked vulnerable and sad and I felt sorry for her.

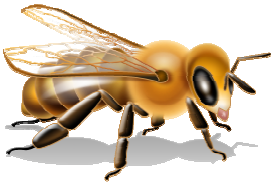
It lasted only a few seconds, then I returned to worrying about the cameraman with the wooden ladder. All the others had shiny aluminium versions. Some were adapted with a seating arrangement on top and I suspect there were hidden mini-bars. Their owners had expensive cameras Sam Goldwyn could have used on his Hollywood epics.

But this chap had a wooden step ladder and his camera looked like a box Brownie. Not only was his ladder wooden - a back-breaking job getting it up and down the stairs - it was covered in paint stains just like my veteran of many years DIY. It would have been useless in a trouble spot. So what was going on? Was he a keen amateur photographer who had wormed his way in? Considering the security, that was unlikely. I concluded he was an undercover protection chap, perhaps over-disguised in his double-breasted suit and snappy trilby. Caricatures of journalists are hard to live down.

Flash forward 25 years to the recent global money meeting in London. I wasn't there, thank goodness, but I wondered why Naomi Campbell and other celebs were. What do they know about financial meltdown? No more than me, and quite possibly some of those trying to find the answers. But one small incident caught my eye. (Here I go again, drifting off the target): a picture of HM The Queen with her arm around the waist of the wife of the President of the United States - the lady who emerged as the superstar fashion leader at this crisis meeting to save the world.

This ground-breaking snap (HM has never been seen in public with her arm around even her husband) aroused little comment, but questions should be asked. Could the late Jade Goody's PR man Max Clifford have been involved in a Palace make-over? "Lighten up a bit, ma'm" he might have said, but I can't believe that. On the other hand, HM doesn't cuddle somebody in public by accident. There may be some Machiavellian Foreign Office policy behind this about which we should be told. This could be the real story behind the summit, and another I missed.

## Bees wanted for the bottom of the garden.



My interest in bees started while staying with friends in Scotland several years ago. A swarm attached itself to the tree and we decided that this was the perfect opportunity to start beekeeping. A borrowed suit and cardboard box was the start. Over the past few months there has been much in the press about the demise of the honey bee so I decided to get going myself. The Peterborough and district beekeepers association run a course at Sacrewell and have put me in contact with a 'bee buddy' who

will guide me through my 1<sup>st</sup> year or so. I have bought and made some hives and found a suitable location. Now I just need insects! Over the next few months honey bees are likely to swarm. If you find a swarm please could you contact me and I will remove it.

Ruth Rigby, 61 Station Road, Nassington. Tel: 01780 782645

Email: [ruth.rigby169@btinternet.com](mailto:ruth.rigby169@btinternet.com)



**Be part of Britain's longest-running fundraising week!**

Thirteen million red envelopes, 300,000 volunteers, thousands of sponsorship events and 1,500 quizzes can only mean one thing – Christian Aid Week which this year takes place from 10 – 16 May.

Launched in 1957, Christian Aid Week is famous for the distinctive red envelope dropping through millions of letterboxes. Last year an amazing £14.7 million was raised to fund work with some of the world's poorest communities. The money raised has helped people like 18-year-old Nadia Kabula in the Democratic Republic of Congo.

**When her father died, Nadia's family struggled desperately to make ends meet. But a tailoring course run by Christian Aid partner *Humanité Nouvelle* has allowed Nadia to imagine a brighter future – and she hopes one day to open her own business. Meanwhile, Nadia is giving others the chance of a fuller life by passing on her skills and her love of fashion to other young girls in her community. 'They've given me education for life,' said Nadia. 'Our supporters constantly amaze me, especially during Christian Aid Week,' said Anne Phipps, Head of Church Marketing and Appeals, Christian Aid. 'Whether collecting door-to-door, putting quiz teams together or doing 101 other exciting and amazing fundraising events, the commitment is phenomenal.' At [www.caweek.org](http://www.caweek.org) we're creating an online community of volunteers, supporters, activists and enthusiasts so please go online and add the details of whatever you are doing.**

## The Trials and Tribulations of Allotment Liz



Well it looks like spring has arrived, all the gardens in our lovely village are bursting with daffodils and tulips and the fresh green shoots of those wonderful perennials who return without fail every year to decorate our once barren gardens are emerging from their winter rest. The trees are beautiful at this time of the year too, white clouds of blackthorn soon to be followed by elderflowers – how about trying some elderflower champagne this year? However, on to the allotment. The

brave allotmenters are hard at work and all of the allotments are looking good and the promise of home grown fruit and veg' is no longer a dream but a reality. It is a joy now that the light evenings have started and we can all get down for an hour or so and for the likes of me who work indoors most days it is truly relaxing, even if you are digging like a demented mole! Some of us are more forward than others and already have many seeds and potatoes up and away, but for those of us like me – do not panic, there is plenty of time and now the soil is warming up we will soon catch up. I have my runner beans, French beans, peas, leeks etc all coming on in the greenhouse, ready for the middle to end of May for planting out when, hopefully all risk of frost and snow have passed. My onions, carrots, broad beans, leeks, cabbage, calabres, turnips, parsnips and swedes are sown but as yet have not shown themselves. What we need now is some nice warm rain please, that will do the trick. We hope to have more water tanks for those of us towards the bottom of the allotments so that we don't develop arms like Orang-u-tangs this summer, however you're very own water butt is what is best (mine has still to be put in by the way!) I am going to do some companion planting as well. I think most of us know that leeks, onions and carrots are good together, but did you know that Borage grown near strawberries helps fight disease and will, apparently, produce bigger and better tasting fruit. I'll try that and let you know. Mint helps deter cabbage fly, Aphids don't like orange nasturtiums and Marigold roots give off a substance which drives away ell worm! Let's hear it for the colour orange!!!! All this information is from a book called "Companion Planting " by Brenda Little and I am certainly going to invest in one as I would like to garden as naturally as possible but must own up to thinking about a bit of chemical help for the ever invasive twitch. We are coming up to the time of the Nassington Open Gardens Weekend and the title for the church exhibition is "A Feast of Flowers" and we, the allotmenters have been asked if we would like to join in and stage a display there are two prizes best floral and best fun entry so when the event draws near I will be on the scrounge for any produce that you may wish to donate for our entry and any suggestions re' design would be most appreciated! Finally this month a personal thank you to Frank and John who mow the path at the allotments and give advice on everything from planting spaces for broad beans to best types of Tatties, thanks fellas you are gems! **Allotment Liz**

**Bishop John Flack**, telephone 01780 782271, Priest-in-charge of the Benefice of Nassington, Yarwell, Woodnewton and Apethorpe.  
**Pastoral Assistant** Jo Booth 01780 783060. **Churchwarden** Alan Rodger 01780 782736

## CHURCH SERVICES FOR MAY 2009

### 3<sup>rd</sup> May

8.30am Holy Communion PB	at Nassington
9.30am Holy Communion	at Woodnewton
10.00am Family Service	at Nassington
11.00am Morning Prayer	at Apethorpe
6.00pm Benefice Evensong	at Yarwell

### 10<sup>th</sup> May

9.30am Holy Communion	at Woodnewton
10.00am Holy Communion	at Nassington
10.30am Morning Prayer	at Yarwell
11.00am Holy Communion	at Apethorpe

### 17<sup>th</sup> May

9.30am Holy Communion	at Woodnewton
10.00am Holy Communion PB	at Nassington
11.00am Holy Communion	at Apethorpe
6.00pm Methodist Service	at Yarwell

### 21<sup>st</sup> May

**Ascension Day**

7.30pm Benefice Eucharist	at Apethorpe
---------------------------	--------------

### 24<sup>th</sup> May

8.30am Holy Communion PB	at Woodnewton
10.00am Holy Communion	at Nassington
10.30am Holy Communion	at Yarwell
11.00am Holy Communion	at Apethorpe

### 31<sup>st</sup> May

10.00am Benefice Eucharist	at Nassington
6.00pm Deanery Evensong	at ?